

INTERMODAL RHINO- NEURO-OTOLOGICAL SKULL BASE COURSE

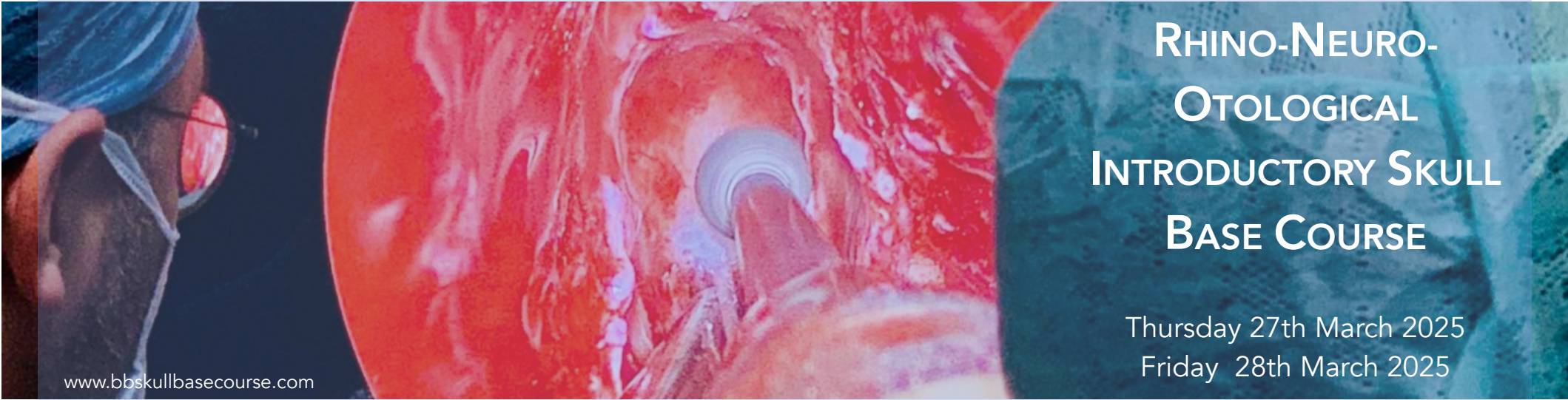
From BASEL
to BRISTOL

Michel Roethlisberger

Yves Brand

Kumar Abhinav

Warren Bennett



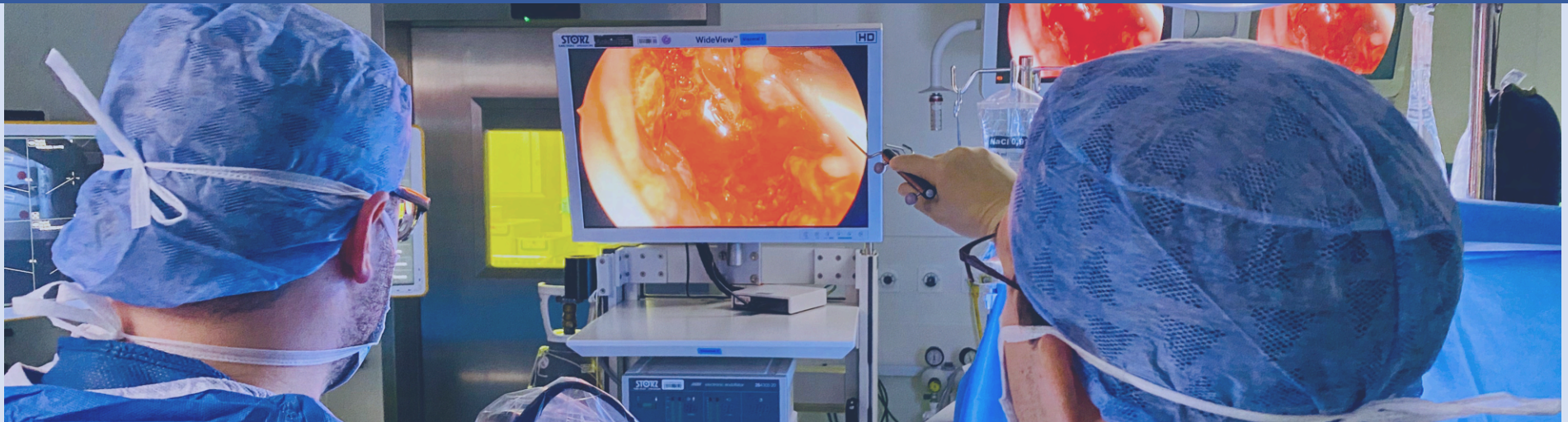
RHINO-NEURO-
OTOLOGICAL
INTRODUCTORY SKULL
BASE COURSE

Thursday 27th March 2025

Friday 28th March 2025

www.bbskullbasecourse.com

RHINO-NEURO-OTOLOGICAL INTRODUCTORY SKULL BASE COURSE



A Two-Day Interdisciplinary Joint Course for Otorhinolaryngologists and Neurosurgeons

We warmly welcome interested otorhinolaryngology and neurosurgery colleagues! In the daily practice, and especially when being interested to deepen the knowledge for an **intermodal skull base collaboration**, it might be difficult to get a starting point for the journey to achieve a team-based approach. Therefore, the **„Rhino-Neuro-Otological Introductory Skull Base Course“** in Basel (Switzerland) aims for an interdisciplinary exchange and hands-on program with great support from the Departments of Neurosurgery and Otorhinolaryngology (University Hospital of Basel and Kantonsspital Graubünden) and our industry partners. The historical venue of the Anatomical Institute of the University of Basel provides a warm and beautiful library for lectures and a modern anatomical dissection hall with high-end infrastructure and cadaveric specimens. There will be a 2:1 participant to anatomical specimen ratio. To maximize the educational value of the course, the course is limited to 14 participants (7 ENTs, 7 neurosurgeons) with a strong emphasis on close mentoring of the participants by the invited international and local expert faculty

PD Dr. Michel Roethlisberger

Department of Neurosurgery
University Hospital Basel
University of Basel

A handwritten signature in black ink, appearing to be 'M. Roethlisberger'.

PD Dr. Yves Brand

Department Otorhinolaryngology
Kantonsspital Graubünden, Chur
University of Basel

A handwritten signature in black ink, appearing to be 'Y. Brand'.



Basel Course (Neurosurgery)
Michel Roethlisberger, MD

PD Dr. med. [FMH]

Michel.Roethlisberger@usb.ch



Bristol Course (Neurosurgery)
Kumar Abhinav, MD

BSc (Hons), MBBS, FRCS

Kumar.Abhinav@nbt.nhs.uk



Basel Course (ENT)
Yves Brand, MD

PD Dr. med. [FMH]

Yves.Brand@ksgr.ch



Bristol Course (ENT)
Warren Bennett, MD

FRCS (ORL-HNS)

Warren.Bennett@uhbw.nhs.uk



Discount for society members

SYNS

Young-ORL

Young Neurosurgeons EANS

SGNC

SGORL

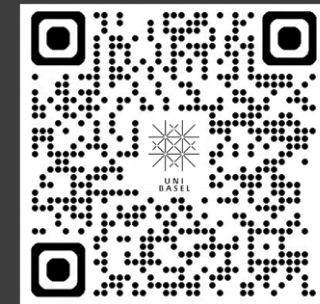
EANS

ERS

www.bbskullbasecourse.com

Invited international and local faculty / speakers

- | | | |
|------------------------------|--------------|--|
| • Prof. Luigi Cavallo | Neurosurgeon | <i>Federico II University Hospital, Naples, Italy</i> |
| • Prof. Prepageran Narayanan | ENT | <i>University of Malaya Medial Center, Kuala Lumpur, Malaysia</i> |
| • Prof. Vicknes Waran | Neurosurgeon | <i>University of Malaya Medial Center, Kuala Lumpur, Malaysia</i> |
| • Prof. Daniel Bodmer | ENT | <i>University Hospital Basel, Basel, Switzerland</i> |
| • Prof. Luigi Mariani | Neurosurgeon | <i>University Hospital Basel, Basel, Switzerland</i> |
| • Dr. Simona Negoias | ENT | <i>University Hospital Basel, Basel, Switzerland</i> |
| • Prof. Raphael Guzman | Neurosurgeon | <i>Children's and University Hospital of Basel, Basel, Switzerland</i> |



Book Now



Preliminary Program - Thursday 27th March 2025

Morning-Session

08.00 AM: Principles of endonasal endoscopic surgeries

- Intermodal neuro-rhinological collaboration
- Ergonomical aspects in rhino-neurosurgical case management
- Hemostasis in endonasal endoscopic skull base surgery
- When does the neurosurgeon need the otorhinolaryngologist?
- When does the otorhinolaryngologist need the neurosurgeon?

09.30 AM: Pause

10.00 AM: Hands-On Dissection

1. Anterior and posterior ethmoidectomy
2. Maxillary antrostomy / Full-House FESS
3. Frontal sinus drill-out
4. Harvesting a vascularized naso-septal flap

12:15 PM: Lunch Break

Afternoon-Session

01.00 PM: Extended / expanded endonasal endoscopic concepts and indications

- Nasal / skull base pathologies and CSF-leaks
- Tailored approach concept for nasal / skull base pathologies
- Principles of graded skull base defect reconstruction
- When does the neurosurgeon need the otorhinolaryngologist?
- When does the otorhinolaryngologist need the neurosurgeon?

2.30 PM: Pause

3:00 PM: Hands-On Dissection

1. Trans-sphenoidal approach
2. Trans-sellar osteo-dural / intradural
3. Trans-tuberculum / chiasmatic sulcus osteo-dural / intradural
4. Skullbase defect reconstruction

06:00 PM: Wrap Up of the Day

07:30 PM: Social Activity and Course Dinner



Luigi Cavallo
Italy



Prepageran Narayanan
Malaysia



Vicknes Waran
Malaysia



Daniel Bodmer
Switzerland



Luigi Mariani
Switzerland



Simona Negoias
Switzerland



Raphael Guzman
Switzerland

Preliminary Program - Friday 28th March 2025

Morning-Session

08.00 AM: Principles of anterior skull base, sphenoid and frontal sinus surgery

- Nasal / skull base pathologies and CSF-leaks
- Frontal sinus diseases and loco-regional complications
- Sphenoid sinus diseases and loco-regional complications
- Intermodal neuro-rhinological collaboration
- When does the neurosurgeon need the otorhinolaryngologist?
- When does the otorhinolaryngologist need the neurosurgeon?

09.30 AM: Pause

10.00 AM: Hands-On Dissection

1. Trans-cribriform osteo-dural / intradural (endoscopic)
2. Frontal sinus cranialization (transcranial)
3. Low basal (subfrontal) approach (transcranial)
4. Frontal sinus plugging techniques (transcranial)

12:15 PM: Lunch Break

Afternoon-Session

01.00 PM: Principles of lateral skull base approaches and indications

- Lateral skull base pathologies and CSF-leaks
- Mastoid / middle ear diseases and loco-regional complications
- Intermodal neuro-otological collaboration
- When does the neurosurgeon need the otorhinolaryngologist?
- When does the otorhinolaryngologist need the neurosurgeon?

2.30 PM: Pause

3:00 PM: Hands-On Dissection

1. Retrosigmoid approach (osteo-dural / intradural)
 - Suprameatal extension (reverse Kawase)
 - Meckel's cave exploration (endoscopy-assisted)
 - Trans-meatal extension
 - Infra-meatal / trans-tubercular (jugular) extension
2. Extended retrosigmoid approach
3. Mastoidectomy

06:00 PM: Wrap Up of the Day, End of Course, Certificate